

# Bluebell

ESTATES



10, Cross Street, Maidstone, ME14 2SL  
Guide Price £280,000

## About this property.....

GUIDE PRICE OF £280,000- £290,000

Don't miss your chance to view this beautifully presented three-bedroom home, perfectly placed for enjoying everything Maidstone has to offer. You're just 1,100m from Fremlin Walk, putting shops, bars, restaurants and coffee spots right on your doorstep — and for anyone commuting, Maidstone East Station is only around 800m away, making trips into London simple.

Step inside and you'll find a stylish modern living room, ideal for switching off after work, alongside a social kitchen/dining space — perfect for hosting friends, sharing meals, or just enjoying a relaxed night in. There's also a spacious ground floor bathroom, adding real practicality to everyday life.

Upstairs offers three well-proportioned bedrooms, including two generous doubles, ideal whether you need a home office, guest room, or space to grow into.

Outside, the property continues to impress with a well-kept rear garden featuring patio and lawn — made for summer BBQs, drinks with friends, and weekend lounging — plus a tidy front garden area, great for bin storage.

## Situation.....

Welcome to Maidstone — Kent's vibrant county town — offering the perfect blend of shopping, dining, riverside walks and an energetic social scene.

For retail therapy, you're spoilt for choice with a great mix of independent boutiques and high street favourites, along with the popular Fremlin Walk Shopping Centre. Food lovers are equally well catered for, with everything from cosy cafés and brunch spots to stylish restaurants and traditional afternoon tea.

In the evenings, Maidstone has a real buzz, with plenty of bars, pubs and entertainment venues to suit every vibe — whether you're after a relaxed drink or a lively night out.

For those who enjoy the outdoors, the town offers scenic walks and cycle routes, plus the chance to take to the water with cruises along the River Medway on the well-known Kentish Lady.

Commuters are also perfectly placed, with Maidstone East Station only minutes away, offering direct services into London including London Bridge, Victoria and Charing Cross, with journeys from around 53 minutes.





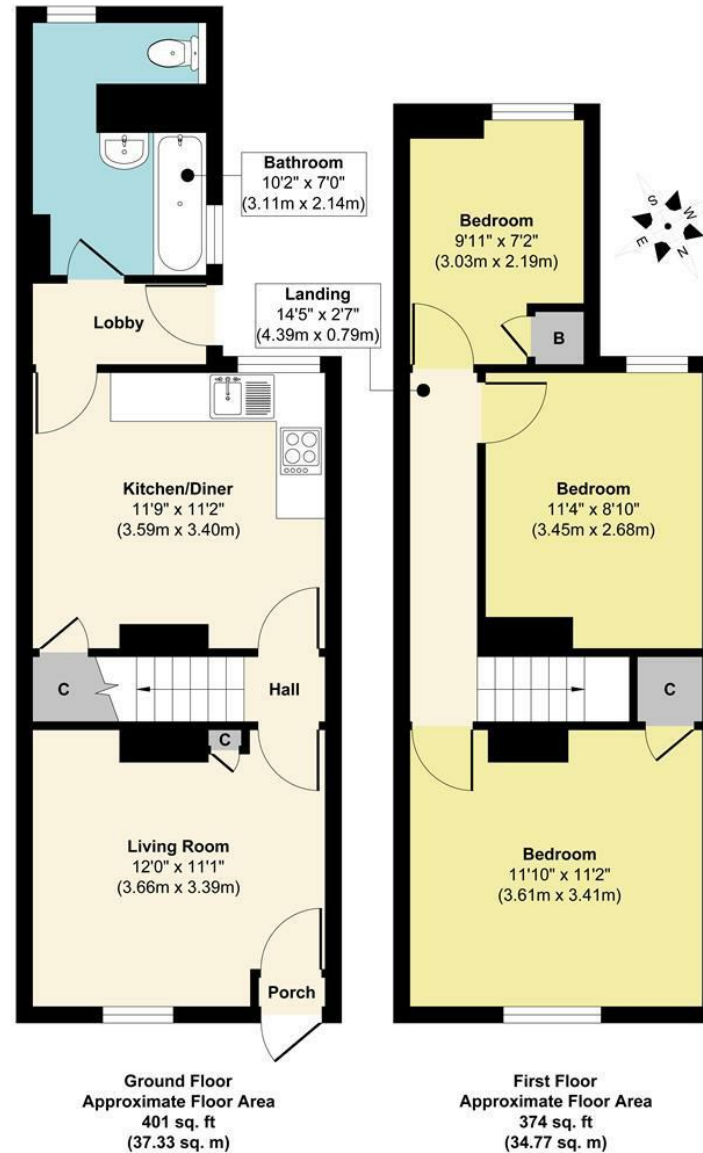




## What the owner says.....

This home has been an amazing place for us and one we have truly loved living in. From the moment we moved in, we enjoyed renovating and improving the property, turning it into a space that has worked perfectly for our lifestyle. One of the biggest draws has always been the location, being in the heart of Maidstone East means everything is within easy reach. We've loved being just a short walk from great bars, cafés, shops and pubs, as well as enjoying the nearby river walks and green spaces. Having Maidstone East station so close by, with fast and direct routes into central London, has been incredibly convenient for work and social life. The road itself is quiet and peaceful, with friendly neighbours and a real sense of community, which is something we'll miss dearly. This home has given us so many happy memories and has been a wonderful base for this chapter of our lives. We'll be sad to leave, but our lifestyle has changed and, as they say, needs must.

# 10, Cross Street, Maidstone, ME14 2SL



**Approx. Gross Internal Floor Area 775 sq. ft / 72.10 sq. m**

Illustration for identification purposes only, measurements are approximate, not to scale.  
Produced by Elements Property

## Agents Notes

Floor plans produced for illustrative purposes only. The position and sizes of doors, windows, rooms and other items are approximate and no responsibility is taken for any error, omission or mis-statement. These particulars are produced for information only and do not form part of any contract. The agent has not had sight of any title documents. Fixtures, fittings and services not tested.



